

Fuel Injection Products for Dodge and Cummins Mid-Range Engines

Application Guide



BOSCH
Invented for life

Application Info			Fuel system				
Application	Engine	Model year	I	Common Rail Injector (REMAN)	Common Rail Pump (REMAN)	Rail	High Pr Connector
			II	Common Rail Injector (NEW)	Common Rail Pump (NEW)	Pressure Relief Valve	
			III	Metering Unit		Pressure Sensor	
Dodge Trucks 6.7L							
Ram P/U	6.7L	2013-2018	I	0 986 435 621	0 986 437 334	0 445 226 126	F 00R J01 831
			II	0 445 120 342	0 445 020 146	1 110 010 013	
			III		0 928 400 642	F 00R L01 029	
Ram P/U	6.7L	2007-2012	I	0 986 435 518	0 986 437 334	0 445 226 044	F 00R J01 831
			II	0 445 120 193	0 445 020 146	1 110 010 013	
			III		0 928 400 642	0 281 006 327	
Cab Chassis	6.7L	2013-2018	I	0 986 435 573	0 986 437 334	0 445 226 044	F 00R J01 831
			II	0 445 120 187	0 445 020 146	1 110 010 013	
			III		0 928 400 642	0 281 006 327	
Cab Chassis	6.7L	2010-2012	I	0 986 435 574 ¹	0 986 437 334	0 445 226 044	F 00R J01 831
			II	0 445 120 188 ¹	0 445 020 146	1 110 010 013	
			III		0 928 400 642	0 281 006 327	
Cab Chassis	6.7L	2007-2010	I	0 986 435 519 ²	0 986 437 334	0 445 226 044	F 00R J01 831
			II	0 445 120 204 ²	0 445 020 146	1 110 010 013	
			III		0 928 400 642	0 281 006 327	
Dodge Trucks 5.9L							
Ram P/U	5.9L	2005-2007	I	0 986 435 505	0 986 437 304	0 445 226 014	F 00R J01 572
			II	0 445 120 238	0 445 020 147	1 110 010 029	
			III		0 928 400 666	0 281 006 325	
Ram P/U	5.9L	2004	I	See Note ³	0 986 437 304	0 445 226 014	F 00R J01 572
			II	See Note ³	0 445 020 147	1 110 010 029	
			III		0 928 400 666	0 281 006 325	
Ram P/U	5.9L	2003	I	0 986 435 503	0 986 437 304	0 445 226 014	F 00R J01 572
			II	0 445 120 255	0 445 020 147	1 110 010 029	
			III		0 928 400 666	0 281 006 325	

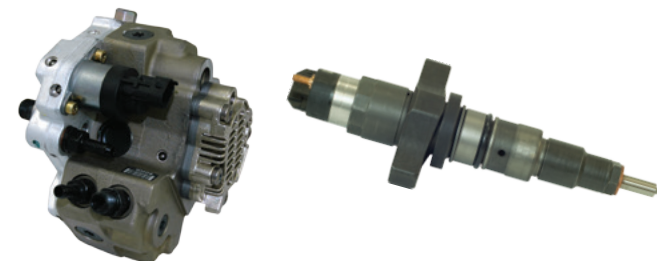
1) w/SCR

2) w/o SCR

3) For product identification, refer to CPL (certified parts lists) number on the engine data plate:

if CPL=8213, 8228 or 8412 use 0 445 120 255 / 0 986 435 503; if CPL= 8346, 8347, 8350 or 8351 use 0 445 120 238 / 0 986 435 505

Ask your Bosch representative for details!



Brand	OE number	Bosch New	Bosch REMAN	Description
Cummins	5264247	0445020146	0986437334	Fuel Injection Pump
Cummins	4940423	0445020146	0986437334	Fuel Injection Pump
Cummins	4947456	0445020146	0986437334	Fuel Injection Pump
Mopar	68027022AC	0445020146	0986437334	Fuel Injection Pump
Mopar	R80277022AA	0445020146	0986437334	Fuel Injection Pump
Cummins	5264246	0445020147	0986437304	Fuel Injection Pump
Cummins	5264246NX	0445020147	0986437304	Fuel Injection Pump
Cummins	3972814	0445020147	0986437304	Fuel Injection Pump
Cummins	4941064	0445020147	0986437304	Fuel Injection Pump
Cummins	3972815	0445020147	0986437304	Fuel Injection Pump
Mopar	R5191780AD	0445020147	0986437304	Fuel Injection Pump
Mopar	R5143425AA	0445020147	0986437304	Fuel Injection Pump
Cummins	4983514	0445120187	0986435573	Common Rail Injector
Cummins	5256034	0445120187	0986435573	Common Rail Injector
Cummins	4994928	0445120188	0986435574	Common Rail Injector
Mopar	68210512AA	0445120188	0986435574	Common Rail Injector
Cummins	5253220	0445120193	0986435518	Common Rail Injector
Cummins	5253220NX	0445120193	0986435518	Common Rail Injector
Mopar	R8069384AA	0445120193	0986435518	Common Rail Injector
Mopar	68069384AA	0445120193	0986435518	Common Rail Injector
Cummins	5253221	0445120204	0986435519	Common Rail Injector
Mopar	R8310747AB	0445120204	0986435519	Common Rail Injector
Cummins	5263316	0445120238	0986435505	Common Rail Injector
Cummins	5263316NX	0445120238	0986435505	Common Rail Injector
Mopar	R5135790AF	0445120238	0986435505	Common Rail Injector
Cummins	5263318	0445120255	0986435503	Common Rail Injector
Cummins	5263318NX	0445120255	0986435503	Common Rail Injector
Cummins	5263318RX	0445120255	0986435503	Common Rail Injector
Cummins	3947550	0445120255	0986435503	Common Rail Injector
Cummins	3949619	0445120255	0986435503	Common Rail Injector
Cummins	4940589	0445120255	0986435503	Common Rail Injector
Mopar	R8004082AC	0445120255	0986435503	Common Rail Injector
Mopar	R8004082AA	0445120255	0986435503	Common Rail Injector
Mopar	68004082AA	0445120255	0986435503	Common Rail Injector
Cummins	4994925	0445120342	0986435621	Common Rail Injector

Brand	OE number	Bosch New	Bosch REMAN	Description
Mopar	68210105AA	0445120342	0986435621	Common Rail Injector
Cummins	4929618	0445226014		Fuel Rail
Cummins	3957077	0445226014		Fuel Rail
Cummins	3957077	0445226014		Fuel Rail
Cummins	3957077	0445226014		Fuel Rail
Cummins	4937282	0445226044		Fuel Rail
Cummins	5275117	0445226126		Fuel Rail
Cummins	5295117	0445226126		Fuel Rail
Cummins	4936097	0928400642		Fuel metering unit
Cummins	4932457	0928400666		Fuel metering unit
Cummins	4938005	1110010013		Pressure Relief valve
Cummins	3947799	1110010029		Pressure Relief valve
Cummins	3979419	F00RJ01572		High Pr Connector
Mopar	5086874AB	F00RJ01572		High Pr Connector
Cummins	4929864	F00RJ01831		High Pr Connector
Mopar	6800533AA	F00RJ01831		High Pr Connector
Cummins	4306993	F00RL01029		Pressure Sensor